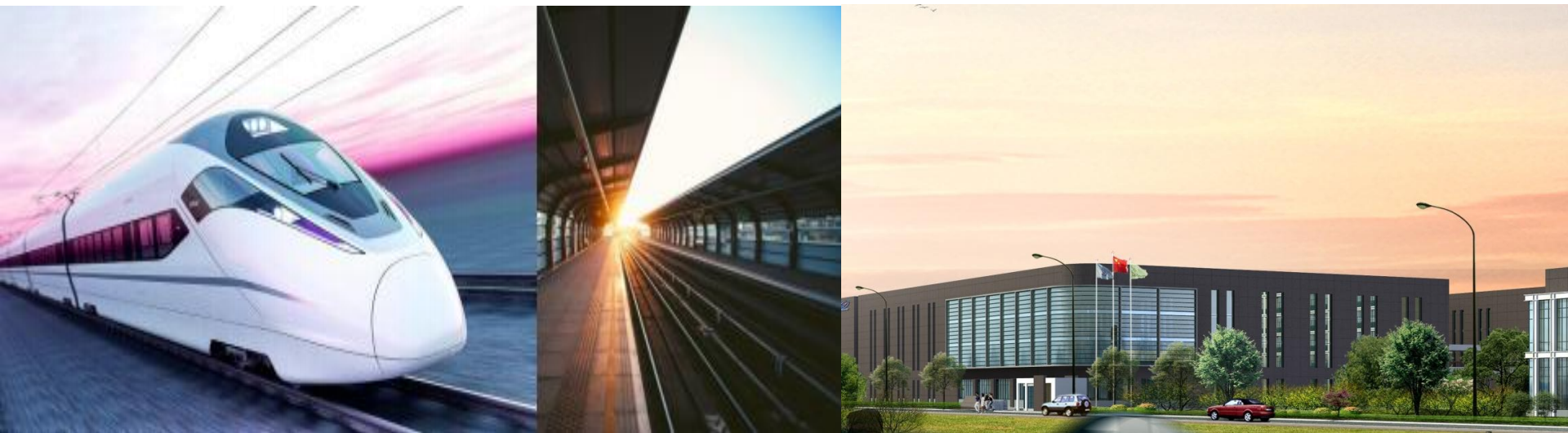


CONNECTION TO FUTURE

STOCK CODE: 300351



YONGGUI

**YGC - 50+ Years for Railway
Connection Technology**



Content



Company Profile



Railway Capability



Product Applications



Globalization

Our Company

Yonggui Company (“YGC”) is a **high-tech enterprise** with 50+ years expertise focused on the research and development, manufacturing, sales and technical support of connectors, connector systems and smart precision products. It was listed on **Shenzhen Stock Exchange** in September 2012. The products are distributed in the three major fields of **new energy and vehicle (56.56%)**, **railway and industrial (37.45%)**, **special market (5.99%)**.

Yonggui has **837 national patents**, and has obtained ISO 9001, ISO/TS 22163, CRCC, ETL, UL and IATF16949 certifications.



Market Value

¥7.012B(\$1.031B)



Consolidated sales

¥ 2,242M (\$329.7M)



Employee

~3171 (30.4% engineers)

50+Years History of Entrepreneurship

World-Class Interconnect Supplier

- 1973**
Foundation
- 1979**
Build 1st connector
- 2008**
Sichuan
Yonggui Set up
- 2009**
High speed
train entry
- 2012**
IPO; Enter
new energy
market



- 2014**
Special
market entry
- 2017**
JV with
Toyo
(Japan)
- 2018**
Yonggui Group
establishment
- 2019+**
Business
transition to
new energy
- 2023**
Globalization
strategy
- 2024**
Singapore
office &
Thailand
plant set up
- 2025**
Glocalization



Interconnect Solutions for Key Market Trends

New Energy

Electric vehicles; private charge & public charging; energy storage; wind power



Industrial

Railway, telecom & data center, off road, industry 4.0



Special Segments

eVTOL, Un-manned equipment, Oil & gas,



Our Customers Around Global

China



Rest of APAC



Europe



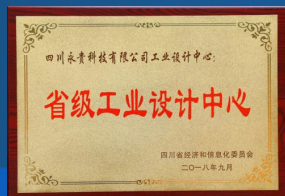
America



Industrial & Customer Awards



National IP Demonstration Company



State Industrial design center



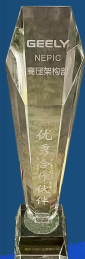
National High tech company



State Enterprise technology center



CRRC Best Supplier Award



GEELY Outstanding Partner Award



Changan Kaicheng Synergy Contribution Award



CRRC Innovation & Collaboration Award



SANY Key Strategic Supplier Award



Dongfang Electric Best Supplier Award



VERTIV Innovation & Collaboration Award



CATARC Premium Charge Award



Patents

837 patents authorized

153 Invention patents

648 utility model patents

36 appearance patents



Manufacturing Capability

VI model for quick response, quality improve & cost control

Injection Molding: 90M+ pcs



Precision Machining: 80M+ pcs



Plating Workshop: 500M+ pcs



Stamping: 50M+ pcs



Die casting: 2M+ pcs



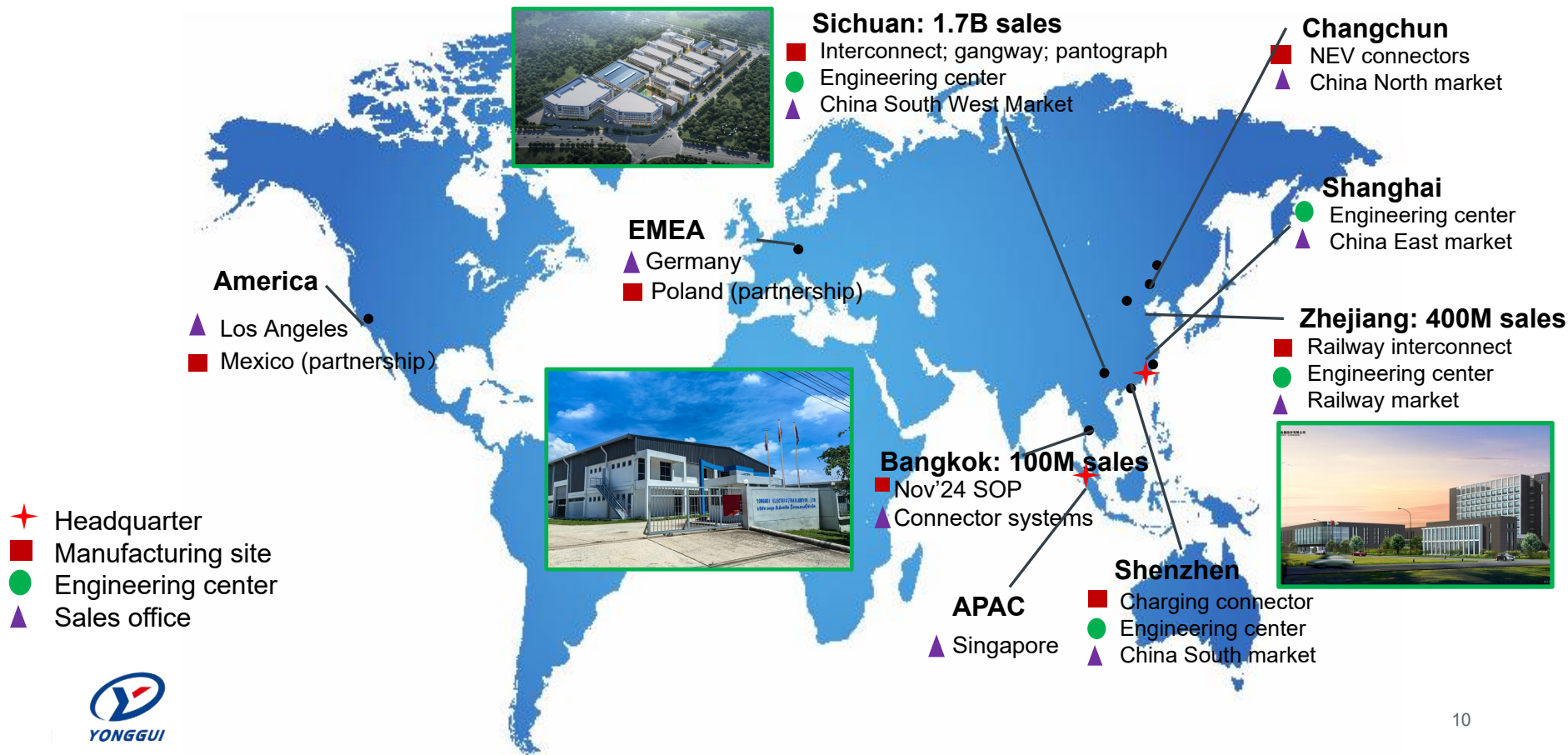
Assembly: 150M+ pcs



New Energy Cables: 600k km



Globalizing Sales & Operation Footprint



Partnership for Global Supply



Focused Products – Railway Connectors

Electric coupler, integrated vehicle end connector



Control, high-low voltage, signal vehicle end connector



Control, network, division console connector



Control, network, AC connector



Integrated cabinet & Jumpers



350+ Railway Projects Globally



City	Type	Product	Status	Delivery year
Brazil	Subway	connector + jumper	Complete supply	2010
Izmir, Turkey	Subway	cabinet + connector + jumper	Complete supply	2016
São Paulo, Brazil	Subway	cabinet + connector + jumper	Complete supply	2018
Angola	Passenger Car	connector + jumper	Complete supply	2019
Kolkata, India	Tram	connector + jumper	Complete supply	2019
Bio, Chile	Subway	cabinet + connector + jumper	Complete supply	2020
Monterrey, Mexico	Tram	cabinet + connector + jumper	Complete supply	2020
Porto, Portugal	Tram	cabinet + connector + jumper	Complete supply	2021
Alameda, Chile	High-Speed EMU	cabinet + connector + jumper	Complete supply	2021
Mexico City, Mexico	Rubber-Tired Vehicle	connector + jumper	Complete supply	2021
United Arab Emirates	High-Speed EMU	cabinet + connector + jumper	Complete supply	2022
Rancagua, Chile	Tram	cabinet + connector + jumper	Complete supply	2023
United Arab Emirates	Tram	cabinet + connector + jumper	Complete supply	2023
Turkey	Subway	cabinet + connector + jumper	Complete supply	2023
Singapore	Type A Subway	cabinet + connector + jumper	In supply	2025
Chile	EMU	cabinet + connector + jumper	In supply	2025
Chile	DMU	cabinet + connector + jumper	In supply	2025
Malaysia	Low-speed EMU	cabinet + connector + jumper	In supply	2025
Mexico	Low-speed EMU	connector + jumper	In supply	2026
Chile	EMU	cabinet + connector + jumper	Under design	2026
Portugal	Tram	cabinet + connector + jumper	In supply	2026

- YG HDC connector products have been supplied since 2004 and have been installed on more than 350 projects both domestically and internationally, including 43 foreign projects in New York, Mexico, Germany, South Korea, Malaysia, Singapore, Saudi Arabia, etc.

46+ High Speed Train Projects



Serial Number	Customer Name	Project	Year Of Delivery	Project Status
1	CRRC	200 km/h EMU	In 2010	Completed supply is running
2	CRRC	350 km/h new generation EMU (short series)	In 2010	Completed supply is running
3	CRRC	350 km/h new generation EMU (long)	Year 2011	Completed supply is running
4	CRRC	CRH6 intercity EMU	In 2012	Completed supply is running
5	CRRC	CRH5 EMU	2012	Completed supply is running
6	CRRC	200 km intercity EMU	In 2012	Completed supply is running
7	CRRC	160 km intercity EMU	In 2012	Completed supply is running
8	CRRC	CRH3A and 3G EMUs	In 2012	Completed supply is running
9	CRRC	CRH6	In 2013	Completed supply is running
10	CRRC	The vehicle has a speed of 250 kilometers per hour	In 2013	Completed supply is running
11	CRRC	The vehicle has a speed of 350 kilometers per hour	In 2013	Completed supply is running
12	CRRC	200 km/h EMU	In 2013	Completed supply is running
13	CRRC	Guangzhou-Shenzhen-Hong Kong EMU	In 2013	Completed supply is running
14	CRRC	Permanent magnet motor project	In 2013	Completed supply is running
15	Bombardier	807 project	In 2013	Completed supply is running
16	CRRC	CRH3 EMU	In 2013	Completed supply is running

17	CRRC	CRH3 EMU	2013 columns	Completed supply is running
18	CRRC	Inspection vehicle	In 2014	Completed supply is running
19	CRRC	160 km/h intercity EMU	In 2014	Completed supply is running
20	CRRC	The vehicle has a speed of 250 kilometers per hour	In 2014	Completed supply is running
21	CRRC	The vehicle has a speed of 350 kilometers per hour	In 2014	Completed supply is running
22	CRRC	CRH 140 km intercity EMU	In 2014	Completed supply is running
23	CRRC	CRH3X EMU	In 2015	Complete the supply
24	CRRC	250 km/h long sleeper EMU	In 2015	Complete the supply
25	CRRC	CRH5 EMU	In 2015	Completed supply is running
26	CRRC	A standard EMU with a speed of 350 kilometers per hour	In 2017	Completed supply is running
27	CRRC	A standard EMU with a speed of 350 kilometers per hour	In 2018	Completed supply is running
29	CRRC	A standard EMU with a speed of 350 kilometers per hour	In 2019	Run in batches
30	CRRC	A standard EMU with a speed of 350 kilometers per hour	In 2019	Run in batches
31	CRRC	A standard EMU with a speed of 350 kilometers per hour	In 2018	Run in batches
32	CRRC	250 km/h standard EMU	In 2018	Completed supply is running
33	CRRC	CR400 EMU	In 2018	Completed supply is running
34	CRRC	A standard EMU with a speed of 350 kilometers per hour	In 2019	Run in batches
35	CRRC	A standard EMU with a speed of 350 kilometers per hour	In 2019	Run in batches
36	CRRC	Vehiclego sports vehicle group	In 2019	Deliveries have been completed
37	CRRC	A typical prototype of a double-decker EMU with a speed of 350 kilometers per hour	In 2019	Deliveries have been completed

38	CRRC	CJ6 intercity EMU	In 2022	Completed supply is running
39	CRRC	250 km/h standard EMU	In 2020	Run in batches
40	CRRC	250 km/h standard EMU	In 2020	Deliveries have been completed
41	CRRC	Taizhou CRH6F-A EMU	In 2020	Deliveries have been completed
42	CRRC	160 km/h power centralized EMU (drum)	In 2021	Run in batches
43	CRRC	200 km/h EMU (City C-type vehicle)	In 2022	Positive loading
44	CRRC	CR series EMUs CRH series EMUs	hitherto	Completed supply is running
45	CRRC	CR series EMUs CRH series EMUs	hitherto	Completed supply is running
46	CRRC	The speed of 350 kilometers per hour Fuxing intelligent EMU	In 2022	Completed supply is running
47	CRRC	The speed of 400 kilometers per hour EMU	In 2024	Completed supply is running
47	CRRC	The speed of 350 kilometers per hour intelligent EMU	hitherto	Mass supply
48	CRRC	The speed of 350 kilometers per hour intelligent EMU	hitherto	Mass supply
49	CRRC	The speed of 350 kilometers per hour intelligent EMU	hitherto	Mass supply

E-coupler Projects



Global project	<ul style="list-style-type: none">• Kuala Lumpur Airport Line• Turkey Low Floor Electric Coupler• Pakistan Metro• Brazil Sao Paulo Metro Line 13• Spain LUGANO Electric Coupler• Chile EMU Electric Coupler• Vienna project• Cairo Monorail• Turkey project• TSI European EMU• Mexico Monterrey• TSI European EMU (Romania)• San Diego E-Coupler (2026)• Porto Ruby Line E-Coupler (2026)• Pachuca (Mexico) E-Coupler (2026)• other projects
----------------	---

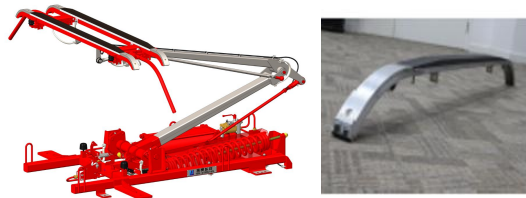
- YGC is 1# e-coupler supplier in China and serves global market as well

Products – Railway Connection system

Axle counter



Pantograph & carbon slide



Railway gangway



Automatic Coupler System



Door system



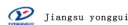
Battery System



Railway Battery Projects



Project Performance – National Advanced R&D Projects



No	Customer	Project	Battery System Functions	Quantity
1	CRRC Changke / Tangshan	Fixing EMU	Auxiliary power supply	55
2	CRRC Sifang	The 600 km of high-speed maglev suspension	Auxiliary power supply + the suspension	1
3	CRRC Sifang	Hydrogen energy intelligent intercity bullet train	Auxiliary power supply + power supply	1
4	CRRC Sifang	The CR450 Next Generation HSR	Auxiliary power supply	1
5	CRRC Sifang	Sichuan-Tibet line	Auxiliary power supply + emergency traction	1

Project Performance – Other Trains



No	Customer	Project	Battery System Functions	Quantity	SOP
1	CRRC	Pure electric tram	Power supply	15	2023-2024
2	CRRC Sifang	Lishui hydrogen-powered tram	Power supply	12	2024-2025
3	CRRC	Harbin engineering car	Power supply	2	2019
4	Shanghai Railway Bureau	Dongfeng 7 shunting machine	Power supply	5	2021
5	Shanghai Railway Bureau	machineshop truck	Power supply	1	2020

Project Performance – High Speed Trains



No	Customer	Project	Battery System Functions	Quantity	SOP
1	CRRC Changke	City bullet train	Auxiliary power supply	11	2021
2	CRRC Pu Town	City bullet train	Auxiliary power supply	2	2022
3	CRRC Changke	400 km EMU (high and cold)	Auxiliary power supply	1	2019
4	CRRC Tangshan	Cargo bullet train	Auxiliary power supply	1	2019
5	CRRC Tangshan	High-speed testing vehicle	Auxiliary power supply	1	2019
6	CRRC Dalian	Low speed maglev	Auxiliary power supply + the suspension	1	2010
7	CRRC strain machine	Medium speed magnetic levitation	Auxiliary power supply + the suspension	1	2020

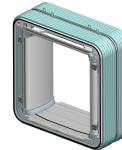
No.	Customer	Project	Qty	Type	Date
1	CRRC Sifang	Foshan Lishui Hydrogen Energy Tram	12	Tram	2025
2	CRRC Sifang	Jiyang Tram Power Battery	22	Tram	2026
3	CRRC Sifang	Jiyang Tram Starting Battery	22	Tram	2026
4	CRRC Ningbo	Tianshui Tram (Battery Module)	15	Tram	2026
5	CRRC Puzhen	Wuxi Metro Line 5	5	Metro	2026
6	CRRC Sifang / Tangshan	Xiong'an New Area to Beijing Daxing International Airport Express Line	15	Metro	2025
7	CRRC Changke / Sifang	250km/h Hydrogen-Powered EMU	2	Hydrogen Fuel Motor Train	2026
8	CRRC Changke / Sifang	Power-Distributed EMU for Sichuan-Tibet Railway	2	Electric Multiple Unit (EMU)	2026
9	Lianyungang New Oriental Container Terminal	Power Battery Room for Lianyungang Reconstruction Project	2	Containerized Energy Storage	2025
10	Haixi	Power Battery Room for Lianyungang G338 New-Build Project	3	Containerized Energy Storage	2025
11	CRRC Zhuzhou Locomotive	Malaysia 3CS EMU (Battery Module)	12	Electric Multiple Unit (EMU)	2026
12	CRRC Datong	Power Switch Cabinet for Datong Locomotive	1	Locomotive	2026
13	Zhonghuan	ES Energy Storage Device	1	Locomotive	2026
14	Haixi	Power Battery Room for Lianyungang G325 New-Build Project	4	Containerized Energy Storage	2025
15	China Aerospace Institute 811	Type A Program-Controlled Power Supply, Institute 811	1	Energy Storage Cabinet	2025

Project Performance – Metro Lines



No	Customer	Project	Battery System Functions	Quantity	SOP
1	CRRC Changke	Chongqing Line 27	Auxiliary power supply + emergency traction	32	2025-2026
2	CRRC Sifang	Qingdao Metro Line 7	Auxiliary power supply + emergency traction	30	2024-2025
3	CRRC Sifang	Jiaozhou L1	Power supply	25	2023-2024
4	CRRC Puzhen	Shaoxing Metro Line 2	Auxiliary power supply + emergency lead	7	2022
5	CRRC	Tianjin Metro Line 1 for additional purchase	Auxiliary power supply + emergency lead	4	2024
6	CRRC Puzhen	Shenzhen Metro Line 6 branch line	Auxiliary power supply + emergency lead	2	2022
7	CRRC Dalian	Taiyuan Metro Line 2	Auxiliary power supply + emergency traction	2	2020

Gangway Projects



永贵贯通道业绩一览表

Supply Records of Yonggui Gangways

类型 Type	序号 NO.	项目名称 Project	车辆型号 Vehicle Type	数量 Quantity	客户 Customer	日期 Date
海外 项目 Foreign projects	1	沙特麦加地铁 Saudi Arabia Mecca Metro	地铁A型车12编组 A type metro, 12 cars per rake of train	176套 176 sets	中车长客 CRRC Changchun	2022
	2	印尼雅加达通勤线 Indonesia Jakarta Commuter Line	地铁12编组 EMU 12 cars per rake of train	177套 177 sets	印尼INKA车辆厂 Indonesia INKA	2024
	3	印尼700/1100车端距项目 Indonesia 700/1100 car distance project	地铁6编组 Metro, 6 cars per rake of train	155套 155 sets	印尼INKA车辆厂 Indonesia INKA	2020
	4	印尼雅加达亚运会项目 Indonesia Jakarta Asian Games project	地铁6编组 Metro, 6 cars per rake of train	40套 40sets	印尼INKA车辆厂 Indonesia INKA	2017
	5	俄罗斯高铁项目 Russian high-speed rail	200KM高铁 200KMhigh-speed rail	9套 9 sets	俄罗斯VSM车辆厂 Russian VSM-Service LLC	2023
	6	俄罗斯PA3项目 Russian Railways PA3 project	120KM国铁 120KM Russian Railways	14套 14 sets	俄罗斯JSC JSC Russian Railways (CDMV)	2025
	7	俄罗斯EP2/2P3/ED4/ED9 Rusia EP2/2P3/ED4/ED9	140KM国铁 140KM Russian Railway	22套 23 sets	俄罗斯JSC JSC Russian Railways	2025
	8	印度高铁T18 India high speed train T18	印度高铁T18 India high speed train T18	20套 20 sets	印度ICF车辆厂 India ICF	2024
	9	印度半风挡 India half module gangway	印度LHB车 India LHB coaches	4 3 套 43 sets	印度ICF车辆厂 India ICF	2022
	10	韩国EMU项目 Korea EMU	一片式柔性护板 One piece flexible protection plate	15套 15 sets	韩国现代Rotem车辆厂 Korea Rotem	2019

- 52 Global projects since 2012
- 11 Intercity EMU projects
- 24 metro projects
- 9 overhaul projects
- 9 global projects



Pantograph Projects



Statement of performance

NO.	Delivery time	client	Project content	Number of supply columns	Number of pantographs	remark
1	May 2018	Chengdu Changke Xinzhu Rail Transit Equipment Co., Ltd	Chengdu Metro Line 5	52	156	
2	April 2018	CRRC Changchun Rail Coach Co., Ltd	Chengdu Metro Line 5	10	30	
3	December 2018	Chengdu Changke Xinzhu Rail Transit Equipment Co., Ltd	Chengdu Metro Line 8	38	76	
4	November 2018	CRRC Changchun Rail Coach Co., Ltd	Chengdu Metro Line 8	5	10	
5	June 2018	Chengdu CRRC Sifang Rail Vehicle Co., Ltd	Chengdu Metro Line 6	60	180	
6	June 2018	CRRC Chengdu Locomotive and Rolling Stock Co., Ltd	Chengdu Metro Line 6	15	45	
7	June 2019	Chengdu CRRC Sifang Rail Vehicle Co., Ltd	Chengdu Metro Line 11	16	48	
8	April 2019	CRRC Chengdu Locomotive and Rolling Stock Co., Ltd	Chengdu Metro Line 11	17	51	
9	December 2019	Chengdu Changke Xinzhu Rail Transit Equipment Co., Ltd	Duijiangyan M-TR project	18	18	streetcar
10	October 2019	Zhuhai Nanzi Electrical System Engineering Co., Ltd	Chengdu Line 6 engineering inspection cart	1	2	
11	October 2019	Beijing Qifan Lutong Technology Co., Ltd	Chengdu Line 6 pantograph Grid inspection cart	1	1	
12	December 2019	Chengdu CRRC Sifang Rail Vehicle Co., Ltd	Chengdu Line 1 overhaul	17	34	overhaul

13	January 2020	Jiangsu Jinchuang Rail Technology Co., Ltd	Chengdu Line 11 engineering inspection cart	1	1	
14	May 2020	Chengdu Changke Xinzhu Rail Transit Equipment Co., Ltd	Chengdu Line 4 frame repair	27	54	Frame repair
15	September 2020	CRRC Tangshan Locomotive and Rolling Stock Co., Ltd	Taizhou S1 line	31	62	municipality
16	September 2020	China Railway Rail Transit Equipment Co., Ltd	CM160 City Car Project	1	1	municipality
17	February 2021	Chengdu CRRC Sifang Rail Vehicle Co., Ltd	Chengdu Metro Line 2 overhauled 1.2 million kilometers	32	64	overhaul
18	February 2021	Chengdu Changke Xinzhu Rail Transit Equipment Co., Ltd	Chengdu 160KM city car trial production project	1	2	municipality
19	February 2021	CRRC Chengdu Locomotive and Rolling Stock Co., Ltd	Chengdu 160KM city car trial production project	1	1	municipality
20	February 2021	CRRC Changchun Rail Coach Co., Ltd	Tianjin Metro Line 6 and 8	32	64	
21	July 2021	Chongqing CRRC Long Passenger Rail Vehicle Co., Ltd	Chongqing Line 4 Phase 2	36	144	AS models
22	May 2021	Tianjin CRRC Sifang Rail Vehicle Co., Ltd	Tianjin Metro Line 9 Phase 1 and Phase 2 were renewed	38	76	overhaul
23	September 2021	CRRC Nanjing Puzhen Vehicle Co., Ltd	Shaoxing Line 2	1	2	
24	September 2021	Hangzhou CRRC Vehicle Co., Ltd	Shaoxing Line 2	10	20	
25	September 2021	Wenzhou CRRC Sifang Rail Vehicle Co., Ltd	Wenzhou city S2 line	37	74	municipality
26	March 2022	Qingdao Zhonggong Jihua	Special 5G mining vehicle	3	6	Special type of car
27	May 2022	CRRC Chengdu Locomotive and Rolling Stock Co., Ltd	Chengdu Line 19 Phase II	45	90	municipality
28	May 2022	Chengdu Changke Xinzhu Rail Transit Equipment Co., Ltd	Chengdu Line 8 Phase II	11	22	
29	Expected December 2022	CRRC Chengdu Locomotive and Rolling Stock Co., Ltd	Chengdu Line 27	29	58	



Chengdu Yonggui Toyo rail transit equipment Co., LTD

30	Expected December 2022	Tianjin CRRC Sifang Rail Vehicle Co., Ltd	Tianjin Jinghai Line	10	20	
31	Expected December 2022	Chengdu Changke Xinzhu Rail Transit Equipment Co., Ltd	Chengdu Line 30	36	72	
32	Expected March 2023	CRRC Chengdu Locomotive and Rolling Stock Co., Ltd	Ziyang line	11	22	
total				643	1506	

No.	Date	Customer	Project	Number of Supply Columns	Qty of Pantograph
1	Jan-25	Baoti CRRC	Jinan Metro Line 6 Engineering Vehicle	1	4
2	Feb-25	Beijing Jingche	Beijing Metro Line 6 Phase III	25	75
3	May-25	CRRC Changchun	A141 Smart Metro	1	2
4	May-25	Chengdu Changke	Chengdu Metro Line 5 Overhaul	62	186
5	Aug-25	Chengdu Changke	AC 3000V Prototype Vehicle	1	1
6	Aug-25	Shenyang CRRC	Shenyang Metro Line 1 Additional Purchase & Overhaul	10	20
7	Jan-26	CRRC Hangzhou	Shaoxing Metro Line 2 Phase II	10	20
8	Apr-26	Qingdao Sifang	Hong Kong Urban Line	1	3
9	Apr-26	Qingdao Sifang	Shijiazhuang Metro Line 4	22	44

Axle Counter Projects



Customer	Project	Line Status
Hangzhou Metro Group Co., Ltd.	Hangzhou Metro Line 9	In Operation
Hangzhou Metro Group Co., Ltd.	Hangzhou Metro Line 1 Phase III	In Operation
Beijing Subway Operation Co., Ltd.	Beijing Subway Line 5	In Operation
Beijing Subway Operation Co., Ltd.	Beijing Subway Yizhuang Line	In Operation
Wuhan Metro Group Co., Ltd.	Wuhan Metro Line 11 Eastern Section	In Operation
Wuhan Metro Group Co., Ltd.	Wuhan Metro Caidian Line	In Operation
Wuhan Metro Group Co., Ltd.	Wuhan Metro Line 7 South Extension	In Operation
Wuhan Metro Group Co., Ltd.	Wuhan Metro Line 2 South Extension	In Operation
Hangzhou Metro Group Co., Ltd.	Hangzhou Metro Line 6	In Operation
Hefei Rail Transit Group Co., Ltd.	Hefei Metro Line 5	In Operation
Hangzhou Metro Group Co., Ltd.	Hangzhou Metro Line 10	In Operation
Shaoxing Jingyue Metro Co., Ltd.	Shaoxing Metro Line 1	In Operation
Hangzhou Metro Group Co., Ltd.	Hangzhou Metro Line 3 Phase I and Northern Extension	In Operation
Huangshi Railway Construction Investment Co., Ltd.	Huangshi Tram Phase I & Vehicle Depot	In Operation
Shaoxing Rail Transit Group Co., Ltd.	Shaoxing Metro Line 2 Phase I	In Operation
Shenyang Metro Group Co., Ltd.	Shenyang Metro Line 2 South Extension	In Operation
Wuhan Optics Valley Tourism Development & Investment Co., Ltd.	Optics Valley Ecological Corridor Supporting Tourism Facilities – Special Tourist Line Phase I (Sky Rail)	In Operation
Wuhan Metro Group Co., Ltd.	Wuhan Metro Line 7 North Extension	In Operation

Customer	Project	Line Status
Ningbo Rail Transit Group Co., Ltd.	Ningbo Metro Line 8	In Operation
Ningbo Rail Transit Group Co., Ltd.	Ningbo Metro Line 6	In Operation
Ningbo Line 10 Municipal Railway Development Co., Ltd.	Ningbo-Cixi Suburban Railway	Under Construction
Chongqing Rail Transit (Group) Co., Ltd.	Chongqing Metro Line 2 (Monorail)	Under Construction
Chongqing Railway (Group) Co., Ltd.	Chongqing Metro Line 15	Under Construction
Chongqing Railway (Group) Co., Ltd.	Chongqing Metro Line 27	Under Construction
CRRC Nanjing Puzhen Rolling Stock Co., Ltd.	Monterrey Metro Line 4, Mexico	Under Construction
CRRC Nanjing Puzhen Rolling Stock Co., Ltd.	Monterrey Metro Line 6, Mexico	Under Construction
Hangzhou Metro Group Co., Ltd.	Hangzhou-Deqing Line	Under Construction
Shaoxing Rail Transit Group Co., Ltd.	Shaoxing Metro Line 2 Phase II	Under Construction
Wenzhou Municipal Railway Line S3 Project Co., Ltd.	Wenzhou Suburban Railway Line S3 Phase I	Under Construction
Wuhan Metro Group Co., Ltd.	Wuhan Metro Xingang Line	Under Construction
Wuhan Metro Group Co., Ltd.	Wuhan Metro Line 1 Renovation Project	Under Construction
Hangzhou Metro Group Co., Ltd.	Hangzhou Metro Line 9 Phase II	Under Construction
Hangzhou Metro Group Co., Ltd.	Hangzhou Metro Line 15	Under Construction
Hangzhou Metro Group Co., Ltd.	Hangzhou Metro Line 18	Under Construction
Shenyang Metro Group Co., Ltd.	Shenyang Metro Line 10	Under Construction
Chongqing Rail Transit (Group) Co., Ltd.	Chongqing Line 18 Northern Extension	Under Construction
Taizhou Rail Transit Group Co., Ltd.	Taizhou Municipal Railway Line S2	Under Construction

Focused Products – Charging Connectors

Inlet, sockets & accessories



Adapter



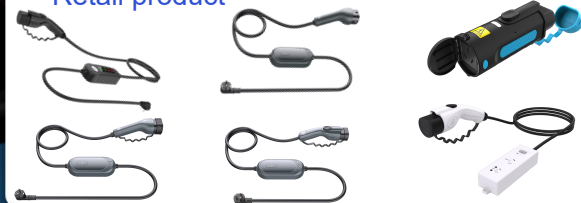
DC Charger



AC Charger



Retail product



Bidirectional Charging Connector



Liquid cooling integrated system



Focused Products – Charging Connectors

YG-GB/YG-EN/YG-NA series DC inlet
YG-GBMCS/YG-SAMCS series MCS inlet



YG-GBMCS/YG-SAMCS series MCS charging connector



YG-LCS series MCS liquid-cooling system



Focused Products – NEV High Voltage Connectors

Batteries/motors high-voltage and high-current connectors



Wire harness



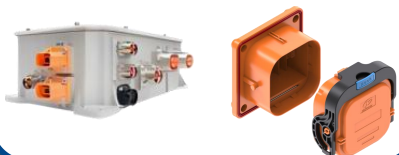
OBC low current connector



Batteries/motors high-voltage connectors



Junction box/PDU/BDU/MSD



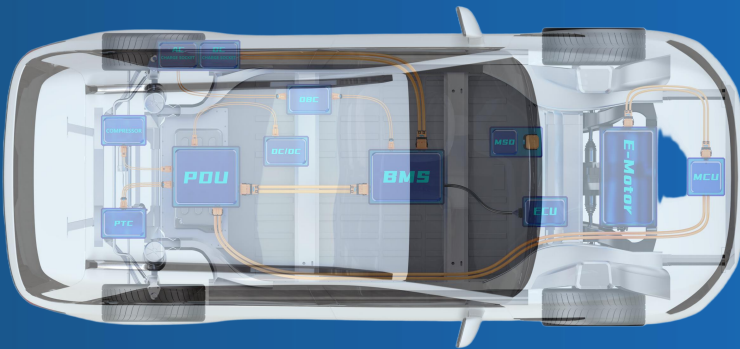
Compressor/PTC high-voltage connector



Vehicle-mounted discharge panel



Battery swapping connector



Focused Products – Energy Storage Connectors



High & low voltage wiring harness



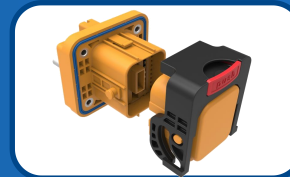
Pack air-cooled high-current connector



Pack/PCS liquid-cooled high-current connector



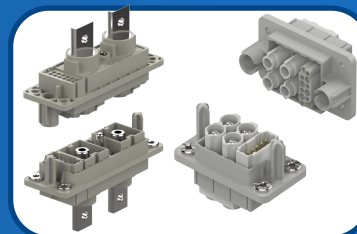
Energy storage high-voltage box



MSD for Pack



PACK/PCS signal connector



Hybrid-mount connector for residential energy storage

Products – Data Center Connectors



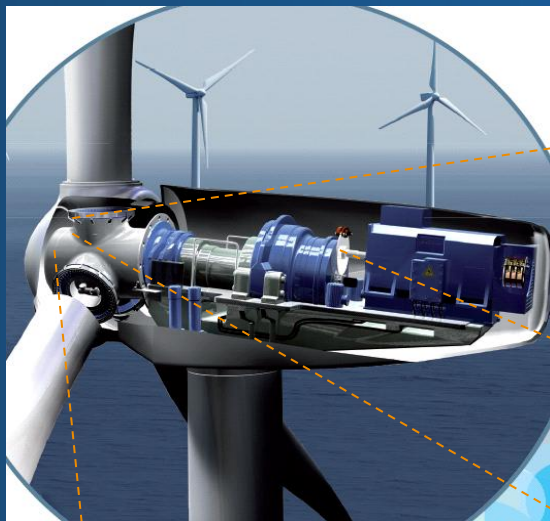
Communication power connector



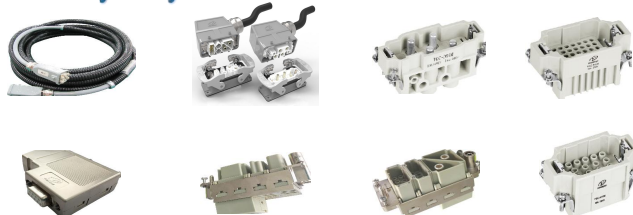
Liquid connectors



Key Products – Wind Power Connector Systems



Heavy Duty Connector & cables for control box



Wind power slip ring and connector



Encoder and motor connector



Pitch system



Key Product – Marine & Offshore Products

Ship-to-Shore
Connection Systems



Marine Stainless Steel Series
Internal High-Voltage
Interconnect Series



Shore Power & Charging Series



Underwater Robot Connector



Deepsea Sealing Series



Key Products – Embodied Robot Connectors

Battery Charging/Discharging Connectors



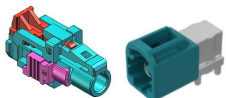
Charging/discharge connectors

Ethernet Communication Connectors



HESD series

Camera Module Connectors



Minifakra series

Joint Breakpoint Connectors



XT/RF 2+2 joint motor connector

Controller Connectors

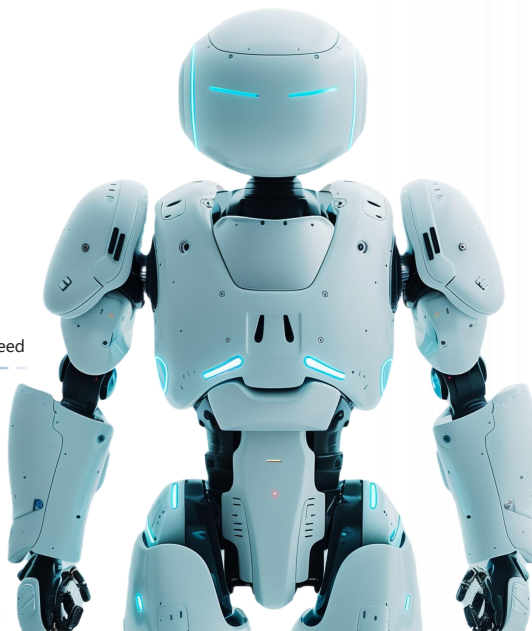


M12 /push pull series

Harness Integration Services



Harness integration



Embodied robot products

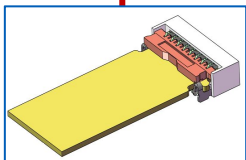
High-speed

High-speed



Focused Products – Unmanned Equipment Connectors

Wire to Board



Mini FPC Connectors



Pull pull/power supply



RF Connectors



Ethernet



Camera module communication



Contact us

Tel: 0086-0816-2847469

0086-18681699976 (APAC)

0086-13880891825 (EMEA)

0086-13304865202 (Special market)

Email: sales@yonggui.com

Web: <https://www.yongguielectric.com/>



YONGGUI

Jay Sun
General Manager –Global Business
Jaysun@yonggui.com
whatsapp: +86 13564872231

